



特点

- * 外形尺寸: 48.5 × 36.0 × 20.5 mm
- * 宽输入电压范围
- * 单、双、三路输出
- * 塑料外壳封装

Features

- * Size: 1.91 × 1.42 × 0.81 inch
- * Wide Input Voltage Range
- * Single, Dual, Triple Output
- * Encapsulation in Plastic Casing

输入特性(Input)

注释(Notes and Conditions)

输入电压范围(Input Voltage Range)	165~265Vac或200~375Vdc	(TPA-03J) 270Vac Max
	85~265Vac或110~375Vdc	(TPA-03K)
输入频率(Input Frequency)	40~60Hz	

输出特性(Output)

注释(Notes and Conditions)

输出电压精度(Voltage Set-Point Accuracy)	Vo1: ± 1%	V _{inom} and I _{onm}
	Vo2: ± 1.5%	双路平衡负载(Balance Load)
	Vo2,Vo3: ± 5%	三路输出(Triple Output)
源效应(Line Regulation)	Vo1: ± 0.2%(Vo2,Vo3: ± 1.5%)	V _{imin} ~V _{imax} , I _{onm}
负载效应(Load Regulation)	Vo1: ± 0.5%(Vo2,Vo3: ± 4%)	10%~100%I _{onm} , V _{inm}
短路保护(Short-Circuit Protection)	连续可恢复 (Continuous, Automatic Recovery)	
瞬态响应(Dynamic Response)		
过冲幅度(Peak Deviation)	± 5%Vo	25%-50%-25% of I _{onm}
恢复时间(Settling Time)	500 μs	and 50%-75%-50% of I _{onm}

一般特性(General)

注释(Notes and Conditions)

温度系数(Temperature Coefficient)	± 0.03%/℃	
隔离电压(Isolation Voltage)		
输入与输出(Input-Output)	2500Vac 1min	
输入与外壳(Input-Case)	2000Vac 1min	
输出与外壳(Output-Case)	500Vac 1min	
绝缘电阻(Isolation Resistance)	≥ 100M Ω	
工作温度(Operating Temperature)	-20℃~+55℃	Ambient Temperature
贮存温度(Storage Temperature)	-40℃~+85℃	
冷却方式(Cooling)	自然冷却(Natural Convection)	
相对湿度(Relative Humidity)	< 90%RH(非凝结), (40 ± 2)℃	
平均故障间隔时间(MTBF)	2 × 10 ⁵ h	MIL-HDBK-217

注: 除非另有说明, 指标一般在标称输入电压、满载和 25℃ 环境温度, 70%RH 下测得。

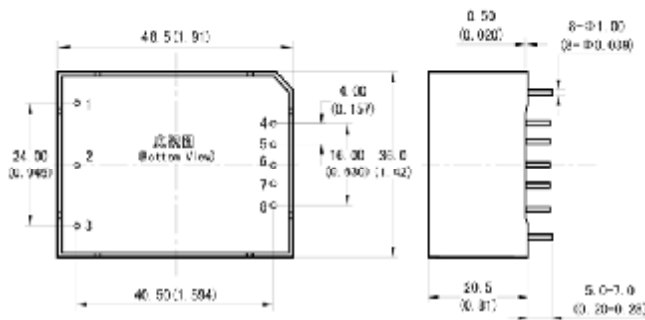
Note: All specifications are typical at nominal input, full load at 25℃, 70%RH unless otherwise stated.

型号列表 (Models)

产品型号 (Model Number)	标称输入电压 (Input Voltage)	标称输出电压 (Output Voltage)	标称负载 (Output Current)	额定输出功率 (Output Power)	效率 (Efficiency)	输出杂音电压峰值 (Ripple and Noise)
	Vdc	Vdc	A	W	%	mVp-p
TPA-03JS05	220	5.0	0.6	3.0	74	50
TPA-03JS12	220	12	0.25	3.0	76	100
TPA-03JS15	220	15	0.2	3.0	77	100
TPA-03JS24	220	24	0.125	3.0	78	100
TPA-03JD05	220	+5.0/-5.0	+0.3/-0.3	3.0	74	50/50
TPA-03JD12	220	+12/-12	+0.125/-0.125	3.0	75	100/100
TPA-03JD15	220	+15/-15	+0.1/-0.1	3.0	75	100/100
TPA-03JD24	220	+24/-24	+0.06/-0.06	3.0	78	100/100
TPA-03JT0512	220	5/ ± 12	0.36/ ± 0.05	3.0	76	50/100/100
TPA-03JT0515	220	5/ ± 15	0.36/ ± 0.05	3.3	76	50/100/100

安装尺寸 (Mechanical Drawing)

尺寸单位是 mm (inches); All Dimensions in mm (inches)



引脚定义 (Pin Definition)

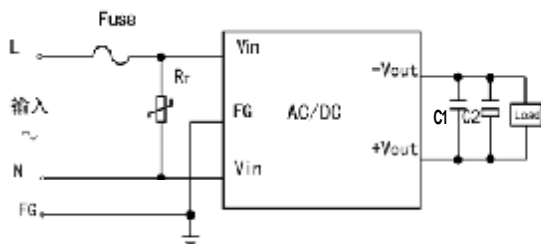
引脚 (Pin)	单路 (Single)	双路 (Dual)	三路 (Triple)	/F 后缀
1	~ Vin(L)	~ Vin(L)	~ Vin(L)	~ Vin(L)
2	~ Vin(N)	~ Vin(N)	~ Vin(N)	~ Vin(N)
3	FG	FG	FG	FG
4	+Vout	-Vout	+Vout2	+Vout
5	NP	NP	COM	NP
6	NP	COM	-Vout2	COM
7	NP	NP	+Vout1	NP
8	-Vout	+Vout	-Vout1	-Vout

未注公差按下表

(Tolerances Unless Otherwise Specified)	
mm	inches
.x ±0.5	.xx ±0.02
.xx ±0.13	.xxx ±0.005

应用电路推荐 (Recommended Application Circuit)

温度降额曲线 (Temperature Derating Curve)



L: 火线 (Live Wire) N: 零线 (Neutral Line)

C1 为瓷片电容或聚酯电容

C1 is Ceramic Capacitor or Polyester Capacitor

C2 为铝电解电容

C2 is Aluminum Electrolytic Capacitor

RT 为压敏电阻

RT: Varistor

