



特点

- *外形尺寸: 70.0×48×23.5 mm
- *宽输入电压范围
- *单、双、三路输出
- *塑料外壳封装

Features

- * Size: 2.76×1.89×0.93 inch
- * Wide Input Voltage Range
- * Single,Dual,Triple Output
- * Encapsulation in Plastic Casing

输入特性(Input)

注释(Notes and Conditions)

输入电压范围(Input Voltage Range)	165~265Vac或200~375Vdc	(TPD-20J) 270Vac Max
	85~265Vac或110~375Vdc	(TPD-20K) 270Vac Max
输入频率(Input Frequency)	40~60Hz	

输出特性(Output)

注释(Notes and Conditions)

输出电压精度(Voltage Set-Point Accuracy)	Vo1:±1%;	Vinom and Ionom
	Vo2:±1.5%	双路平衡负载(Balance Load)
	Vo2,Vo3:±5%	三路输出(Triple Output)
源效应(Line Regulation)	Vo1:±0.2%(Vo2,Vo3:±1.5%)	Vimin~Vimax, Ionom
负载效应(Load Regulation)	Vo1:±0.5%(Vo2,Vo3:±4%)	10%~100%Ionom, Vinom
短路保护(Short-Circuit Protection)	间歇自恢复	
	Continuous, Automatic Recovery	
瞬态响应(Dynamic Response)		
过冲幅度(Peak Deviation)	±5%Vo	25%~50%~25% of Ionom
恢复时间(Settling Time)	500 μ	and 50%~75%~50% of Ionom

一般特性(General)

注释(Notes and Conditions)

温度系数(Temperature Coefficient)	±0.05%/°C	
隔离电压(Isolation Voltage)		
输入与输出(Input-Output)	3000Vac 1min	
输入与外壳(Input-Case)	1500Vac 1min	
输出与外壳(Output-Case)	500Vac 1min	
绝缘电阻(Isolation Resistance)	≥100MΩ	
工作环境温度(Ambient Temperature)	-5°C ~ +55°C	
贮存温度(Storage Temperature)	-40°C ~ +85°C	
冷却方式(Cooling)	自然冷却(Natural Convection)	
相对湿度(Relative Humidity)	≤90RH(非凝结, No dewdrop), (40±2) °C	
平均故障间隔时间(MTBF)	2×10 ⁶	Bellcore TR-332 (Ta=25°C)

注: 除非另有说明, 指标一般在标称输入电压、满载和25°C环境温度。

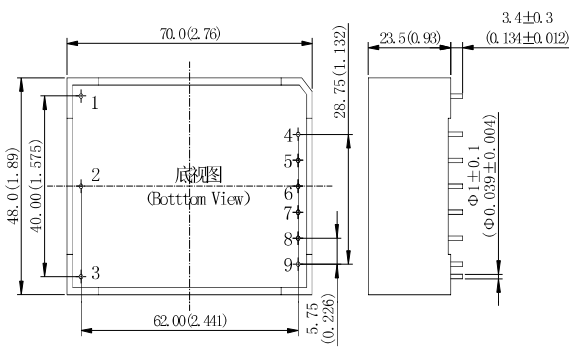
Note: All specifications are typical at nominal input, full load at 25°C, unless otherwise stated.

型号列表 (Models)

产品型号 (Model Number)	标称输入电压 (Input Voltage) Vac	标称输出电压 (Output Voltage) Vdc	标称负载 (Output Current) Adc	额定输出功率 (Output Power) W	效率 (Efficiency) %	输出杂音电压峰峰值 (Ripple and Noise) mVp-p
TPD-20KS05G	220	5.0	4.0	20.0	81	50
TPD-20KS12G	220	12.0	1.66	20.0	83	120
TPD-20KS24G	220	24.0	0.82	20.0	84	240
TPD-20KD05G	220	+5.0/-5.0	+2.0/-2.0	20.0	82	50/50
TPD-20KD12G	220	+12.0/-12.0	+0.83/-0.83	20.0	82	120/120
TPD-20KT0512G	220	+5.0/+12V/-12.0	+3.0/+0.2/-0.2	20.0	80	50/120/120
TPD-20KT0515G	220	+5.0/+15V/-15.0	+2.8/+0.2/-0.2	20.0	80	50/150/150

安装尺寸 (Mechanical Drawing)

尺寸单位是 mm (inches) ; All Dimensions in mm (inches)



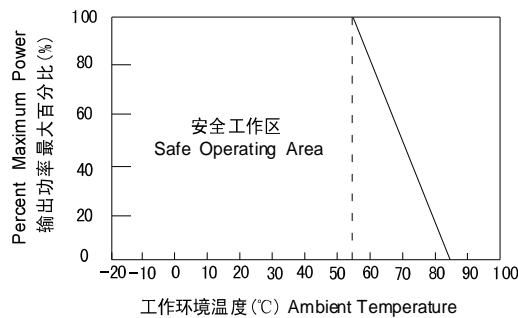
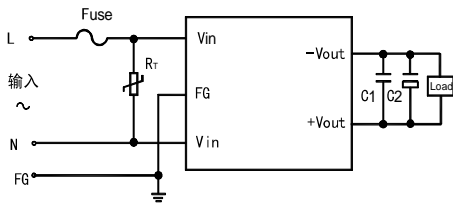
引脚号	符号	名称	功能	备注
1	Vin	输入	AC	
2	FG	接地	PE	
3	Vout	输出	DC	
4	HP	高压	DC	
5	HP	高压	DC	
6	HP	高压	DC	
7	HP	高压	DC	
8	HP	高压	DC	
9	HP	高压	DC	

未注公差按下表
(Tolerances Unless Otherwise Specified)

mm	inches
.x ±0.5	.xx ±0.02
.xx ±0.13	.xxx ±0.005

应用电路推荐 (Recommended Application Circuit)

温度降额曲线 (Temperature Derating Curve)



- L: 火线 (Live Wire)
- N: 零线 (Neutral Line)
- FG: 接地 (Ground)
- C1: 为瓷片电容或聚酯电容 (C1 is Ceramic Capacitor or Polyester Capacitor)
- C2: 为铝电解电容 (C2 is Aluminum Electrolytic Capacitor)
- R_T: 为压敏电阻 (R_T is Varistor)