



特点

- * 外形尺寸: 62 × 45 × 22.5 mm
- * 宽输入电压范围
- * 单、双、三路输出
- * 塑料外壳封装

Features

- * Size: 2.44 × 1.77 × 0.89 inch
- * Wide Input Voltage Range
- * Single, Dual, Triple Output
- * Encapsulation in Plastic Casing

输入特性 (Input)

注释 (Notes and Conditions)

输入电压范围 (Input Voltage Range)	165~265Vac 或 200~375Vdc	(TPC-15J)	270Vac Max
	85~265Vac 或 110~375Vdc	(TPC-15K)	270Vac Max
输入频率 (Input Frequency)	40~60Hz		

输出特性 (Output)

注释 (Notes and Conditions)

输出电压精度 (Voltage Set-Point Accuracy)	Vo1: ± 1%	V _{inom} and I _{onm}
	Vo2: ± 1.5%	双路平衡负载 (Balance Load)
	Vo2, Vo3: ± 5%	三路输出 (Triple Output)
源效应 (Line Regulation)	Vo1: ± 0.2% (Vo2, Vo3: ± 1.5%)	V _{imin} ~V _{imax} , I _{onm}
负载效应 (Load Regulation)	Vo1: ± 0.5% (Vo2, Vo3: ± 4%)	10%~100% I _{onm} , V _{inm}
短路保护 (Short-Circuit Protection)	连续可恢复 (Continuous, Automatic Recovery)	
瞬态响应 (Dynamic Response)		
过冲幅度 (Peak Deviation)	± 5%Vo	25%-50%-25% of I _{onm}
恢复时间 (Settling Time)	500 μs	and 50%-75%-50% of I _{onm}

一般特性 (General)

注释 (Notes and Conditions)

温度系数 (Temperature Coefficient)	± 0.03%/°C	
隔离电压 (Isolation Voltage)		
输入与输出 (Input-Output)	2500Vac 1min	
输入与外壳 (Input-Case)	2000Vac 1min	
输出与外壳 (Output-Case)	500Vac 1min	
绝缘电阻 (Isolation Resistance)	≥ 100M Ω	
工作温度 (Operating Temperature)	-10°C ~ +55°C	Ambient Temperature
贮存温度 (Storage Temperature)	-40°C ~ +85°C	
冷却方式 (Cooling)	自然冷却 (Natural Convection)	
相对湿度 (Relative Humidity)	< 90%RH (非凝结), (40 ± 2)°C	
平均故障间隔时间 (MTBF)	2 × 10 ⁵ h	MIL-HDBK-217

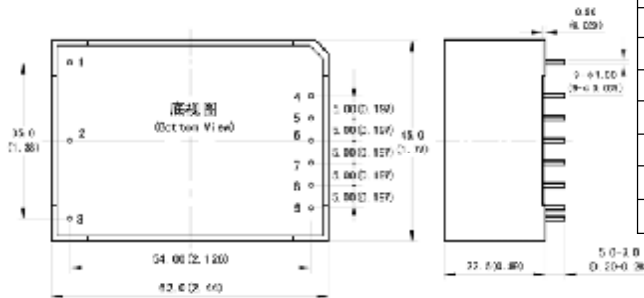
注: 除非另有说明, 指标一般在标称输入电压、满载和 25°C 环境温度, 70%RH 下测得。

Note: All specifications are typical at nominal input, full load at 25°C, 70%RH unless otherwise stated.

型号列表 (Models)

产品型号 (Model Number)	标称输入电压 (Input Voltage)	标称输出电压 (Output Voltage)	标称负载 (Output Current)	额定输出功率 (Output Power)	效率 (Efficiency)	输出杂音电压峰峰值 (Ripple and Noise)
	Vdc	Vdc	A	W	%	mVp-p
TPC-15JS3V3	220	3.3	4	13.2	76	50
TPC-15JS05	220	5	3	15	80	50
TPC-15JS12	220	12	1.25	15	82	100
TPC-15JS15	220	15	1	15	82	100
TPC-15JS24	220	24	0.63	15	83	100
TPC-15JS48	220	48	0.31	15	84	100
TPC-15JD05	220	+5/-5	+1.5/-1.5	15	80	50/50
TPC-15JD12	220	+12/-12	+0.63/-0.63	15	82	100/100
TPC-15JD15	220	+15/-15	+0.5/-0.5	15	83	100/100
TPC-15JT0512	220	5/ ± 12	2.0/ ± 0.2	15	80	50/100/100
TPC-15JT0515	220	5/ ± 15	1.8/ ± 0.2	15	80	50/100/100

安装尺寸 (Mechanical Drawing)



*注: 没有 Trim 功能 9 脚为空脚须加后缀 “/T”

尺寸单位是 mm (inches); All Dimensions in mm (inches)

引脚定义 (Pin Definition)

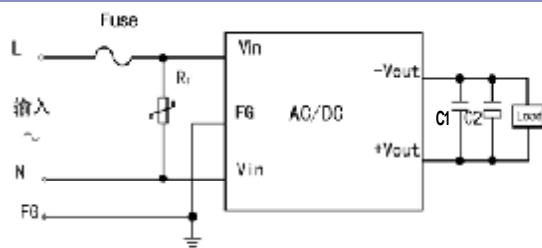
引脚 (Pin)	单路 (Single)	双路 (Dual)	三路 (Triple)	/F 后缀
1	~ Vin(L)	~ Vin(L)	~ Vin(L)	~ Vin(L)
2	~ Vin(N)	~ Vin(N)	~ Vin(N)	~ Vin(N)
3	FG	FG	FG	FG
4	Vout1	Vout2	Vout2	Vout1
5	NP	NP	COM	NP
6	NP	COM	Vout3	COM
7	NP	NP	Vout1	NP
8	GND	Vout1	GND(COM)	Vout2
9*	Trim	Trim	Trim	Trim

未注公差按下表

(Tolerances Unless Otherwise Specified)

mm	inches
.x ±0.5	.xx ±0.02
.xx ±0.13	.xxx ±0.005

应用电路推荐 (Recommended Application Circuit)



L: 火线 (Live Wire) N: 零线 (Neutral Line)

C1 为瓷片电容或聚酯电容

C1 is Ceramic Capacitor or Polyester Capacitor

C2 为铝电解电容

C2 is Aluminum Electrolytic Capacitor

RT 为压敏电阻

RT: Varistor

温度降额曲线 (Temperature Derating Curve)

