



特点

- * 外形尺寸: 55.0 × 45.0 × 22.5 mm
- * 宽输入电压范围
- * 单、双、三路输出
- * 塑料外壳封装

Features

- * Size: 2.17 × 1.77 × 0.89 inch
- * Wide Input Voltage Range
- * Single, Dual, Triple Output
- * Encapsulation in Plastic Casing

输入特性 (Input)

注释 (Notes and Conditions)

输入电压范围 (Input Voltage Range)	165 ~ 265Vac 或 200~375Vdc	(TPB-05J)	265Vac Max
	85~265Vac 或 110~375Vdc	(TPB-05K)	265Vac Max
输入频率 (Input Frequency)	40 ~ 60Hz		

输出特性 (Output)

注释 (Notes and Conditions)

输出电压精度 (Voltage Set-Point Accuracy)	Vo1: ± 1%	V _{in} om and I _{on} om
	Vo2: ± 1.5%	双路平衡负载 (Balance Load)
	Vo2, Vo3: ± 5%	三路输出 (Triple Output)
源效应 (Line Regulation)	Vo1: ± 0.2% (Vo2, Vo3: ± 1.5%)	V _{in} in ~ V _{in} max, I _{on} om
负载效应 (Load Regulation)	Vo1: ± 0.5% (Vo2, Vo3: ± 4%)	V _{en} om, 10% ~ 100% I _{on} om
短路保护 (Short-Circuit Protection)	连续可恢复 (Continuous, Automatic Recovery)	
瞬态响应 (Dynamic Response)		
过冲幅度 (Peak Deviation)	≤ ± 5%Vo	25%-50%-25% of I _{on} om
恢复时间 (Settling Time)	≤ 500 μs	and 50%-75%-50% of I _{on} om

一般特性 (General)

注释 (Notes and Conditions)

温度系数 (Temperature Coefficient)	± 0.03%/°C	
隔离电压 (Isolation Voltage)		
输入与输出 (Input-Output)	2500Vac 1min	
输入与外壳 (Input-Case)	2000Vac 1min	
输出与外壳 (Output-Case)	500Vac 1min	
绝缘电阻 (Isolation Resistance)	≥ 100M Ω	
工作温度 (Operating Temperature)	-10°C ~ +55°C	Ambient Temperature
贮存温度 (Storage Temperature)	-40°C ~ +85°C	
冷却方式 (Cooling)	自然冷却 (Natural Convection)	
相对湿度 (Relative Humidity)	≤ 90%RH (非凝结), (40 ± 2)°C	
平均故障间隔时间 (MTBF)	2 × 10 ⁶ h	MIL-HDBK-217

注: 除非另有说明, 指标一般在标称输入电压、满载和 25°C 环境温度, 70%RH 下测得。

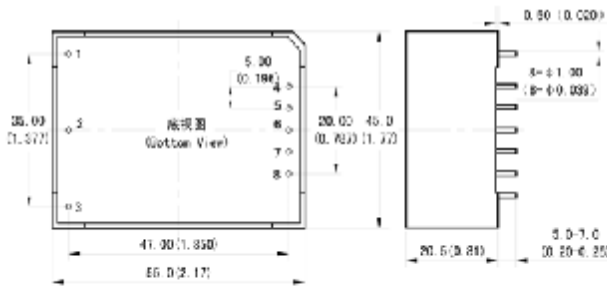
Note: All specifications are typical at nominal input, full load at 25°C, 70%RH unless otherwise stated.

型号列表 (Models)

产品型号 (Model Number)	标称输入电压 (Input Voltage)	标称输出电压 (Output Voltage)	标称负载 (Output Current)	额定输出功率 (Output Power)	效率 (Efficiency)	输出杂音电压峰峰值 (Ripple and Noise)
	Vdc	Vdc	A	W	%	mVp-p
TPB-05JS3V3	220	3.3	1.5	5	75	50
TPB-05JS05	220	5	1	5	76	50
TPB-05JS12	220	12	0.42	5	78	100
TPB-05JS15	220	15	0.33	5	78	100
TPB-05JS24	220	24	0.21	5	80	100
TPB-05JD05	220	+5/-5	+0.5/-0.5	5	75	50/50
TPB-05JD12	220	+12/-12	+0.21/-0.21	5	76	100/100
TPB-05JD15	220	+15/-15	+0.17/-0.17	5	78	100/100
TPB-05JT0512	220	+5/ ± 12	+0.7/ ± 0.1	5	76	50/120/120
TPB-05JT0515	220	+5/ ± 15	+0.7/ ± 0.08	5	76	50/150/150

安装尺寸 (Mechanical Drawing)

尺寸单位是 mm (inches); All Dimensions in mm (inches)



引脚定义 (Pin Definition)

	单路 (Single)	双路 (Dual)	三路 (Triple)	/F 后缀
~ Vin(L)	~ Vin(L)	~ Vin(L)	~ Vin(L)	~ Vin(L)
~ Vin(N)	~ Vin(N)	~ Vin(N)	~ Vin(N)	~ Vin(N)
FG	FG	FG	FG	FG
+Vout	-Vout	+Vout2	+Vout	
NP	NP	COM	NP	
NP	COM	-Vout2	COM	
NP	NP	+Vout1	NP	
-Vout	+Vout	GND(COM)	-Vout	

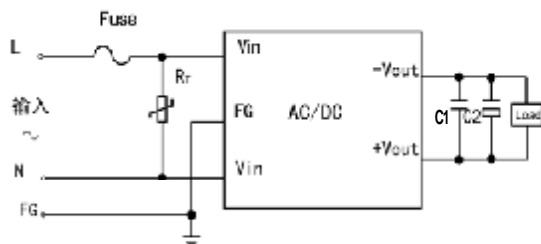
未注公差按下表

(Tolerances Unless Otherwise Specified)

mm	inches
.x ±0.5	.xx ±0.02
.xx ±0.13	.xxx ±0.005

应用电路推荐 (Recommended Application Circuit)

温度降额曲线 (Temperature Derating Curve)



L: 火线 (Live Wire)
N: 零线 (Neutral Line)

C1、C3 为瓷片电容或聚脂电容

C1、C3 is Ceramic Capacitor or Polyester Capacitor

C2、C4 为铝电解电容

C2、C4 is Aluminum Electrolytic Capacitor

RT 为压敏电阻

RT: Varistor

