



特点

- * 外形尺寸: 50.8 × 25.4 × 12.7 mm
- * 4: 1 电压输入范围
- * 固定开关频率
- * 铝壳封装

Features

- * Small Size: 2.00 × 1.00 × 0.50 inch
- * 4: 1 Input Voltage Range
- * Constant Frequency
- * Encapsulated in Aluminium Cases

输入特性 (Input)

注释 (Notes and Conditions)

输入电压范围 (Input Voltage Range)			
标称 (Nominal)	48Vdc	18~75Vdc	80Vdc Max
输入欠压保护 (Input Undervoltage Protection)		<V _{imin} -0.5V	
遥控功能 (Remote On/Off Function) ¹			型号加尾缀 /R (Suffix "R")
正逻辑 (Positive Logic)	开启 (On)	高电平或悬空 (High Level or Open Circuit)	相对于 -Vin (Reference to -Vin)
	关闭 (Off)	零电平或短路 (Connect to -Vin)	

输出特性 (Output)

注释 (Notes and Conditions)

输出电压精度 (Voltage Set-Point Accuracy)		± 1%	V _{inom} and I _{onm}
源效应 (Line Regulation)		± 0.2%Vo	V _{imin} ~V _{imax} , I _{onm}
负载效应 (Load Regulation)		± 0.5%Vo	10%~100%I _{onm} , V _{inm}
输出过流保护点 (Current Limit Threshold Range)		110%I _o ~ 150%I _o	
瞬态响应 (Dynamic Response)			
过冲幅度 (Peak Deviation)		± 5%Vo	25%-50%-25% of I _{onm}
恢复时间 (Settling Time)		200 μs	and 50%-75%-50% of I _{onm}
输出过压保护 (Output Overvoltage Protection)		箝位 (Clamp Type)	
输出电压调节范围 (Voltage Trim Range) ¹		± 10%	型号加尾缀 /T (Suffix "T")
短路保护 (Short-Circuit Protection)		连续可恢复 (Continuous, Automatic Recovery)	

一般特性 (General)

注释 (Notes and Conditions)

温度系数 (Temperature Coefficient)		± 0.02%/°C	
隔离电压 (Isolation Voltage)			
输入与输出 (Input-Output)		1000Vdc 1min	
输入与外壳 (Input-Case)		700Vdc or 500Vac 1min	
输出与外壳 (Output-Case)		500Vdc or 350Vac 1min	
工作温度 (Operating Temperature)		- 40°C ~ + 85°C	
贮存温度 (Storage Temperature)		- 55°C ~ + 125°C	
冷却方式 (Cooling)		自然冷却 (Natural Convection)	
平均故障间隔时间 (MTBF)		2 × 10 ⁵ h	MIL-HDBK-217
重量 (Weight)		35g	

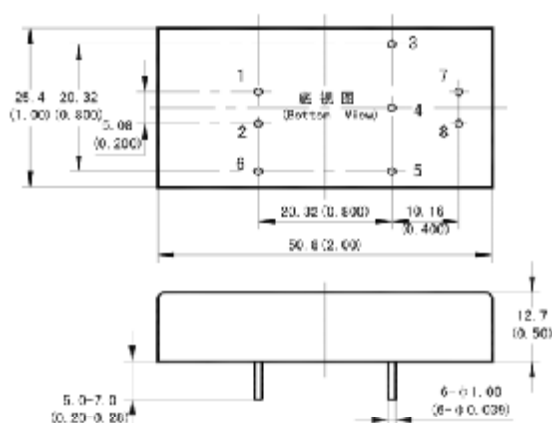
注 (Notes): 1 功能可选 (Optional)

型号列表 (Models)

产品型号 (Model Number)	标称输入电压 (Input Voltage) Vdc	标称输出电压 (Output Voltage) Vdc	标称负载 (Output Current) A	额定输出功率 (Output Power) W	效率 (Efficiency) %	输出杂音电压峰峰值 (Ripple and Noise) mVp-p
SFQ48S3V3-10W	48	3.30	3	10	78	75
SFQ48S5-10W	48	5.00	2.00	10	80	75
SFQ48S12-10W	48	12.00	0.83	10	82	100
SFQ48S15-10W	48	15.00	0.67	10	82	100

安装尺寸 (Mechanical Drawing)

尺寸单位是 mm(inches); All Dimensions in mm (inches)



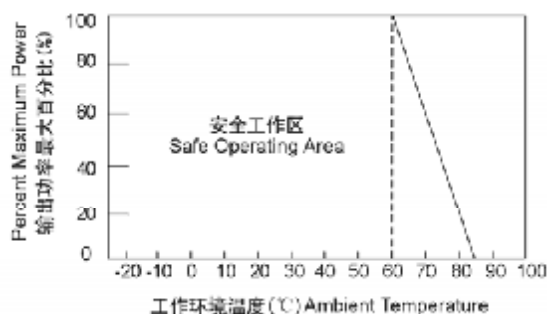
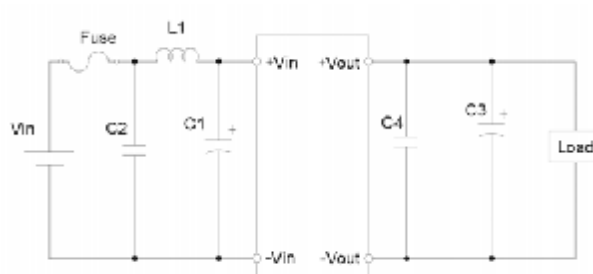
引脚定义 (Pin Definition)	
引脚 (Pin)	单路 (Single)
1	+Vin
2	-Vin
3	+Vout
4	NP(Trim)*
5	-Vout
6	NP(Rem)*
7, 8	NP

未注公差按下表 (Tolerances Unless Otherwise Specified)	
mm	inches
.x ±0.5	.xx ±0.02
.xx ±0.13	.xxx ±0.005

*: Trim 引脚功能可选 (Trim Pin, Optional)
 Rem 引脚功能可选 (Rem Pin, Optional)

应用电路推荐 (Recommended Application Circuit)

温度降额曲线 (Temperature Derating Curve)



注: 除非另有说明, 指标一般在标称输入电压、满载和 25°C 环境温度下测得。

Note: All specifications are typical at nominal input, full load at 25°C unless otherwise stated.