



特点

- * 外形尺寸: 50.8 × 50.8 × 12.7 mm
- * 2: 1 电压输入范围
- * 固定开关频率
- * 六面金属封装

Features

- * Small Size: 2.00 × 2.00 × 0.50 inch
- * 2: 1 Input Voltage Range
- * Constant Frequency
- * Encapsulated in Metal Cases

输入特性 (Input)

注释 (Notes and Conditions)

输入电压范围 (Input Voltage Range)			
标称 (Nominal)	48Vdc	36~72Vdc	80Vdc Max
遥控功能 (Remote On/Off Function)			
正逻辑 (Positive Logic)	开启 (On)	+5Vdc 或 悬空 (Open Circuit)	相对于 -Vin (Reference to -Vin)
	关闭 (Off)	零电平或短路 (Connect to -Vin)	

输出特性 (Output)

注释 (Notes and Conditions)

输出电压精度 (Voltage Set-Point Accuracy)	± 1%	V _{inom} and I _{onm}
源效应 (Line Regulation)	± 0.2%V _o	V _{imin} ~V _{imax} , I _{onm}
负载效应 (Load Regulation)	± 1%V _o	10%~100%I _{onm} , V _{inm}
瞬态响应 (Dynamic Response)		
过冲幅度 (Peak Deviation)	± 5%V _o	25%-50%-25% of I _{onm}
恢复时间 (Settling Time)	200 μs	and 50%-75%-50% of I _{onm}
输出过流保护点 (Current Limit Threshold Range)	110%~160%I _o	
短路保护 (Short-Circuit Protection)	连续可恢复 (Continuous, Automatic Recovery)	

一般特性 (General)

注释 (Notes and Conditions)

温度系数 (Temperature Coefficient)	± 0.02%/°C	
隔离电压 (Isolation Voltage)		
输入与输出 (Input-Output)	500Vdc or 350Vac 1min	
输入与外壳 (Input-Case)	500Vdc or 350Vac 1min	
输出与外壳 (Output-Case)	500Vdc 1min	
工作壳温 (Operating Case Temperature)	- 25°C ~ + 85°C	
贮存温度 (Storage Temperature)	- 40°C ~ + 125°C	
冷却方式 (Cooling)	自然冷却 (Natural Convection)	
平均故障间隔时间 (MTBF)	2 × 10 ⁵ h	MIL-HDBK-217
重量 (Weight)	75g	

注: 除非另有说明, 指标一般在标称输入电压、满载和 25°C 环境温度下测得。

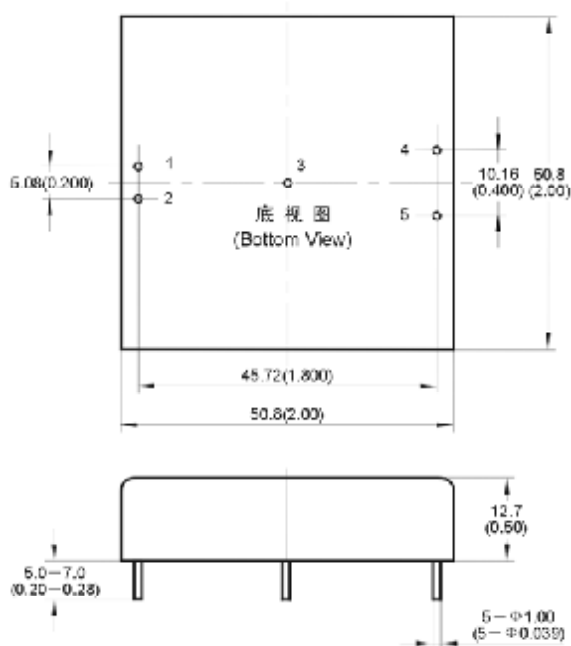
Note: All specifications are typical at nominal input, full load at 25°C unless otherwise stated.

型号列表 (Models)

产品型号 (Model Number)	标称输入电压 (Input Voltage) Vdc	标称输出电压 (Output Voltage) Vdc	标称负载 (Output Current) A	额定输出功率 (Output Power) W	效率 (Efficiency) %	输出杂音电压峰峰值 (Ripple and Noise) mVp-p
SF48S70-30W	48	70	0.43	30	88	450
SF48S96-30W	48	96	0.31	30	88	450

安装尺寸 (Mechanical Drawing)

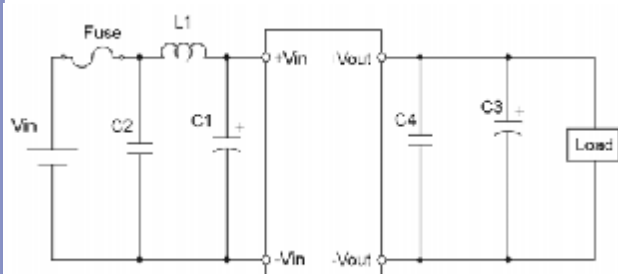
尺寸单位是 mm(inches); All Dimensions in mm (inches)



引脚定义 (Pin Definition)	
引脚 (Pin)	单路 (Single)
1	+Vin
2	-Vin
3	Rem
4	+Vout
5	-Vout

未注公差按下表 (Tolerances Unless Otherwise Specified)	
mm	inches
.x ±0.5	.xx ±0.02
.xx ±0.13	.xxx ±0.005

应用电路推荐 (Recommended Application Circuit)



温度降额曲线 (Temperature Derating Curve)

