



特点

- * 外形尺寸:50.8 × 50.8 × 12.7 mm
- * 2: 1 电压输入范围
- * 双控制器
- * 六面金属封装

Features

- * Small Size: 2.00 × 2.00 × 0.50 inch
- * 2: 1 Input Voltage Range
- * Dual Controllers
- * Encapsulated in Metal Cases

输入特性(Input)		注释(Notes and Conditions)	
输入电压范围(Input Voltage Range)	36~72Vdc	80Vdc Max	
遥控功能(Remote On/Off Function)			
正逻辑(Positive Logic)	开启(On)	高电平或悬空 (High Level or Open Circuit)	相对于 -Vin (Reference to -Vin)
	关闭(Off)	零电平或短路 (Connect to -Vin)	

输出特性(Output)		注释(Notes and Conditions)	
输出电压精度(Voltage Set-Point Accuracy)	± 1%	Vinom and Ionom=Io1=Io2=3A	
源效应(Line Regulation)	± 0.2%Vo	Vimin~Vimax, Ionom	
负载效应(Load Regulation)	Vo1: ± 0.4%Vo ; Vo2: ± 1%Vo	Vinom,10%~100%Iomax ,Another:Io=0	
输出电压调节范围(Voltage Trim Range)	± 10%		
输出过流保护点(Current Limit Threshold Range)	≥ 120%Io		
短路保护(Short-Circuit Protection)	连续可恢复 (Continuous ,Automatic Recovery)		
瞬态响应(Dynamic Response)			
过冲幅度(Peak Deviation)	± 5%Vo	25%-50%-25% of Ionom	
恢复时间(Settling Time)	200 μs	and 50%-75%-50% of Ionom	

一般特性(General)		注释(Notes and Conditions)	
温度系数(Temperature Coefficient)	± 0.02%/℃		
隔离电压(Isolation Voltage)			
输入与输出(Input-Output)	1000Vdc or 700Vac 1min		
输入与外壳 (Input-Case)	1000Vdc or 700Vac 1min		
输出与外壳(Output-Case)	500Vdc 1min		
绝缘电阻(Isolation Resistance)	50M Ω		
工作壳温(Operating Case Temperature)	- 25℃ ~ + 85℃		
贮存温度(Storage Temperature)	- 40℃ ~ + 125℃		
冷却方式(Cooling)	自然冷却(Natural Convection)		
平均故障间隔时间(MTBF)	2 × 10 ⁵ h	MIL-HDBK-217	
重量(Weight)	75g		

注: 除非另有说明, 指标一般在标称输入电压、满载和 25℃ 环境温度下测得。

Note: All specifications are typical at nominal input ,full load at 25℃ unless otherwise stated.

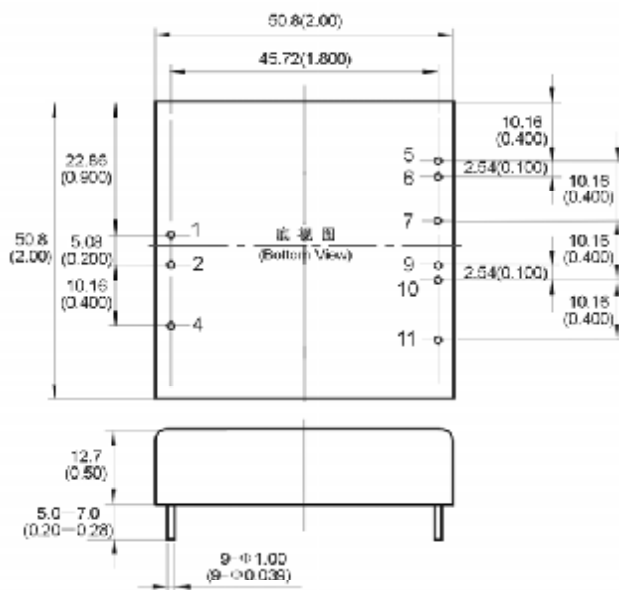
型号列表 (Models)

产品型号 (Model Number)	标称输入电压 (Input Voltage) Vdc	标称输出电压 (Output Voltage) Vdc	输出电流 (Output Current) A	最大输出功率 (Max. Output Power) W	效率* (Efficiency) %	输出杂音电压峰峰值 (Ripple and Noise) mVp-p
SF48D051V8-25W	48	5.0 1.8	0.1~5 0.1~6	25	79	100
SF48D052V5-25W	48	5.0 2.5	0.1~5 0.1~6	25	79	100
SF48D053V3-25W	48	5.0 3.3	0.1~5 0.1~6	25	79	100

注(Note):* Vin=48V, Io1=Io2=3A

安装尺寸 (Mechanical Drawing)

尺寸单位是 mm (inches); All Dimensions in mm (inches)

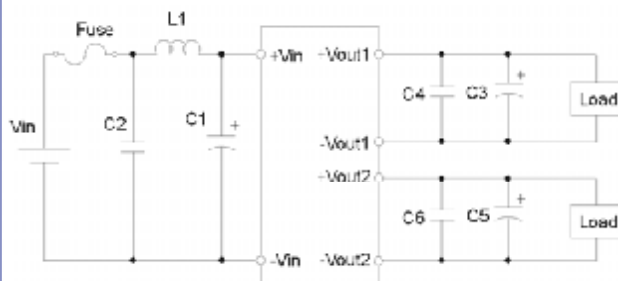


引脚(Pin)	双路(Dual)
1	+Vin
2	-Vin
4	Rem
5	+Vout2
6	Trim2
7	-Vout2
9	Trim1
10	+Vout1
11	-Vout1

mm	inches
.x ± 0.5	.xx ± 0.02
.xx ± 0.13	.xxx ± 0.005

注: 管脚 7 和管脚 11 在模块内部是连通的。(Pin7 and Pin11 are connected in module)

应用电路推荐 (Recommended Application Circuit)



温度降额曲线 (Temperature Derating)

