



型号定义 (Model Name)



选项(Optional) : /T 表示带 Trim 功能
(/T denotes Trim function)
/L 表示铝外壳
(/L denotes aluminium case)

特点

- * 外形尺寸: 31.8 × 20.4 × 10.7 mm
- * 2: 1 电压输入范围
- * 固定开关频率
- * 六面金属封装

Features

- * Size: 1.25 × 0.80 × 0.42 inch
- * 2: 1 Input Voltage Range
- * Constant Frequency
- * Encapsulated in Metal Cases

输入特性 (Input)

注释(Notes and Conditions)

| 输入电压范围(Input Voltage Range) | | |
|-----------------------------|----------|-----------|
| 标称(Nominal) 5Vdc | 4.5~9Vdc | 15Vdc max |
| 标称(Nominal) 12Vdc | 9~18Vdc | 20Vdc max |
| 标称(Nominal) 24Vdc | 18~36Vdc | 40Vdc max |
| 标称(Nominal) 48Vdc | 36~72Vdc | 80Vdc max |

输出特性 (Output)

注释(Notes and Conditions)

| | | |
|--|--|---|
| 输出电压精度(Voltage Set-Point Accuracy) | ± 1% | V _{inom} and I _{onm} |
| 源效应(Line Regulation) | V _{o1} : ± 0.2%V _o (V _{o2} : ± 1.5%V _o) | V _{imin} ~V _{imax} , I _{onm} |
| 负载效应(Load Regulation) | V _{o1} : ± 0.5%V _o (V _{o2} : ± 4.0%V _o) | 10%~100%I _{onm} , V _{inm} |
| 输出过流保护点(Current Limit Threshold Range) | >110%I _o | |
| 短路保护(Short-Circuit Protection) | 连续可恢复 (Continuous, Automatic Recovery) | |
| 瞬态响应(Dynamic Response) | | |
| 过冲幅度(Peak Deviation) | ± 5%V _o | 25%-50%-25% of I _{onm} |
| 恢复时间(Settling Time) | 500 μs | and 50%-75%-50% of I _{onm} |

一般特性 (General)

注释(Notes and Conditions)

| | | |
|----------------------------------|--------------------------------|--------------|
| 温度系数(Temperature Coefficient) | ± 0.02%/°C | |
| 隔离电压(Isolation Voltage) | | |
| 输入与输出(Input-Output) | 1000Vdc 1min | |
| 输入与外壳(Input-Case) ¹ | 700Vdc (1000Vdc)or 500Vac 1min | |
| 输出与外壳(Output-Case) | 700Vdc or 500Vac 1min | |
| 工作壳温(Operating Case Temperature) | - 25°C ~ + 85°C | |
| 贮存温度(Storage Temperature) | - 55°C ~ + 125°C | |
| 冷却方式(Cooling) | 自然冷却(Natural Convection) | |
| 平均故障间隔时间(MTBF) | 2 × 10 ⁵ h | MIL-HDBK-217 |
| 重量(Weight) | 15g | |

注: 除非另有说明, 指标一般在标称输入电压、满载和 25°C 环境温度下测得。

Note: All specifications are typical at nominal input, full load at 25°C unless otherwise stated.

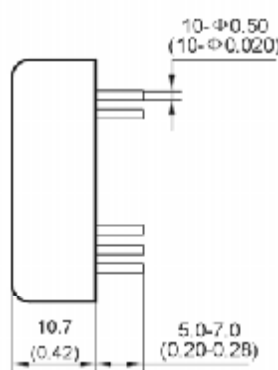
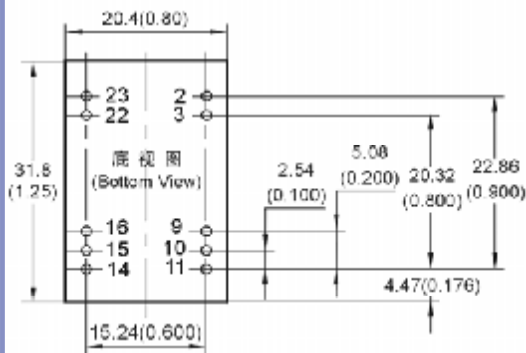
1 DIL-3W系列是1000Vdc 1min(1000Vdc for DIL-3W).

型号列表 (Models)

| 产品型号 (Model Number) | 标称输入电压 (Input Voltage) Vdc | 标称输出电压 (Output Voltage) Vdc | 标称负载 (Output Current) A | 额定输出功率 (Output Power) W | 效率 (Efficiency) % | 输出杂音电压峰峰值 (Ripple and Noise) mVp-p |
|------------------------|----------------------------------|-----------------------------------|-------------------------------|-------------------------------|-------------------------|--|
| DIL3D0512 | 5.0 | ± 12 | ± 0.125 | 3 | 70 | 100 |
| DIL3D0515 | 5.0 | ± 15 | ± 0.10 | 3 | 69 | 100 |
| DIL5S1205 | 12 | 5.0 | 1.0 | 5 | 75 | 50 |
| DIL5S1212 | 12 | 12 | 0.42 | 5 | 78 | 100 |
| DIL5S243V3 | 24 | 3.3 | 1.5 | 5 | 73 | 50 |
| DIL3S2405 | 24 | 5.0 | 0.6 | 3 | 70 | 50 |
| DIL5S2405 | 24 | 5.0 | 1.0 | 5 | 74 | 50 |
| DIL3S2412 | 24 | 12 | 0.25 | 3 | 72 | 100 |
| DIL5S2412 | 24 | 12 | 0.42 | 5 | 75 | 100 |
| DIL3S2415 | 24 | 15 | 0.2 | 3 | 73 | 100 |
| DIL5S2415 | 24 | 15 | 0.33 | 5 | 78 | 100 |
| DIL3D2405 | 24 | ± 5.0 | ± 0.30 | 3 | 75 | 50 |
| DIL3D2412 | 24 | ± 12 | ± 0.125 | 3 | 72 | 100 |
| DIL5D2412 | 24 | ± 12 | ± 0.21 | 5 | 77 | 100 |
| DIL3D2415 | 24 | ± 15 | ± 0.10 | 3 | 75 | 100 |
| DIL5D2415 | 24 | ± 15 | ± 0.166 | 5 | 75 | 100 |
| DIL5S483V3 | 48 | 3.3 | 1.5 | 5 | 73 | 50 |
| DIL3S4805 | 48 | 5.0 | 0.6 | 3 | 71 | 50 |
| DIL5S4805 | 48 | 5.0 | 1.0 | 5 | 75 | 50 |
| DIL3S4812 | 48 | 12 | 0.25 | 3 | 75 | 100 |
| DIL5S4812 | 48 | 12 | 0.42 | 5 | 78 | 100 |
| DIL3S4815 | 48 | 15 | 0.2 | 3 | 79 | 100 |
| DIL3D4805 | 48 | ± 5.0 | ± 0.30 | 3 | 70 | 50 |
| DIL3D4812 | 48 | ± 12 | ± 0.125 | 3 | 70 | 100 |
| DIL3D4815 | 48 | ± 15 | ± 0.10 | 3 | 75 | 100 |

安装尺寸 (Mechanical Drawing)

尺寸单位是 mm (inches); All Dimensions in mm (inches)



引脚定义 (Pin Definition)

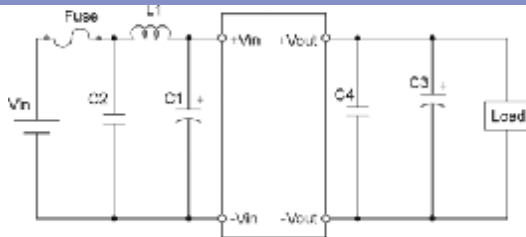
| 引脚 (Pin) | 单路 (Single) | 双路 (Dual) |
|----------|-------------|-----------|
| 2 | -Vin | -Vin |
| 3 | -Vin | -Vin |
| 9 | N C | COM |
| 10 | N C | N C |
| 11 | N C | -Vout |
| 14 | +Vout | +Vout |
| 15 | N C | N C |
| 16 | -Vout | COM |
| 22 | +Vin | +Vin |
| 23 | +Vin | +Vin |

未注公差按下表 (Tolerances Unless Otherwise Specified)

| mm | inches |
|------------|--------------|
| .x ± 0.5 | .xx ± 0.02 |
| .xx ± 0.13 | .xxx ± 0.005 |

注: 对带后缀/T的产品 Pin10 是 Trim 端

应用电路推荐 (Recommended Application Circuit)



温度降额曲线 (Temperature Derating Curve)

